

U.S. Army Public Health Center

# Army Influenza Activity Report

Week ending 31 October 2020 (week 44)

## Influenza Vaccination Coverage\*

As of 6 November 2020

30%	Army Active Duty
29%	Army Guard
54%	Army Reserve

\*Data Source: MEDPROS

Click to enlarge images.

## SUMMARY

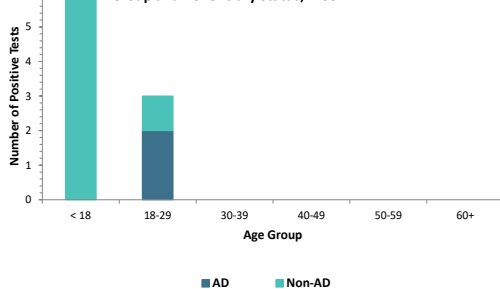
Flu activity is currently low in the Army population. The proportion of positive influenza A specimens for the Army in week 44 is 0.4%, which is lower than the historical average of 2.6% for the same time period; all regional health commands had a percent positive rate lower than their respective historical averages. The majority of positive respiratory specimens were among younger populations; those under 18 years of age accounted for 82% of all positive respiratory specimens in week 44. Among active duty Service members, 18 through 29 year-olds accounted for all positive specimens. No hospitalizations were reported in week 44 but the season total thus far is two; six influenza-related hospitalizations were reported as of this time last season. Nationwide, influenza activity is low with 0.1% of specimens tested by clinical laboratories being positive for influenza A.

## GEOGRAPHIC SPREAD

Data on the geographical spread of influenza is unavailable this season due to the COVID-19 pandemic. For information from previous seasons and additional information about nationwide influenza surveillance, please visit the Centers for Disease Control and Prevention's website by clicking [here](#).

## DEMOGRAPHICS

Positive Respiratory Specimen Results from Army MTFs by Age Group and Beneficiary Status, Week 44

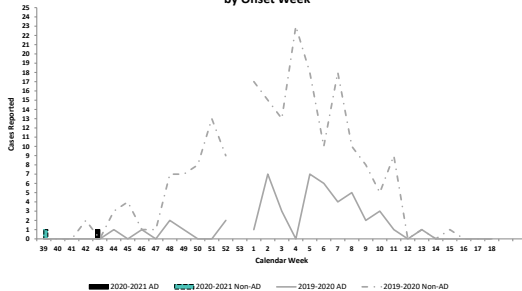


**AD:** Two positive respiratory specimens were collected from active duty (AD) Service members in week 44; all were from Soldiers 18 through 29 years of age.

**Non-AD:** Nine positive respiratory specimens were collected from non-AD individuals; 89% (n=8) were from those under 18 years of age.

## INFLUENZA-ASSOCIATED HOSPITALIZATIONS

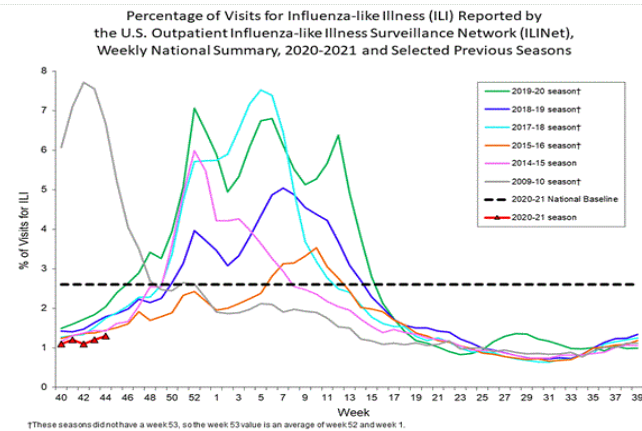
Army Influenza-Associated Hospitalizations Reported in DRSi by Onset Week



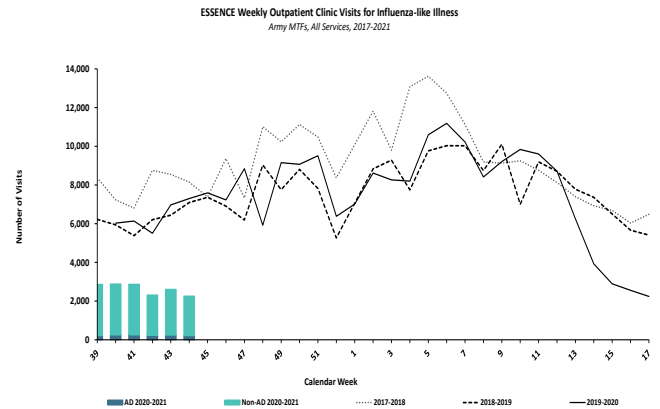
No influenza-associated hospitalizations were reported to the Disease Reporting System internet (DRSi) in week 44; two hospitalizations have been reported for the entire season thus far. During the 2019-2020 season, no hospitalizations were reported in week 44, and two hospitalizations had been reported since the start of the season to week 44.

\*DRSi does not capture cases older than 65 years old for influenza-associated hospitalizations.

## ILI ACTIVITY - UNITED STATES

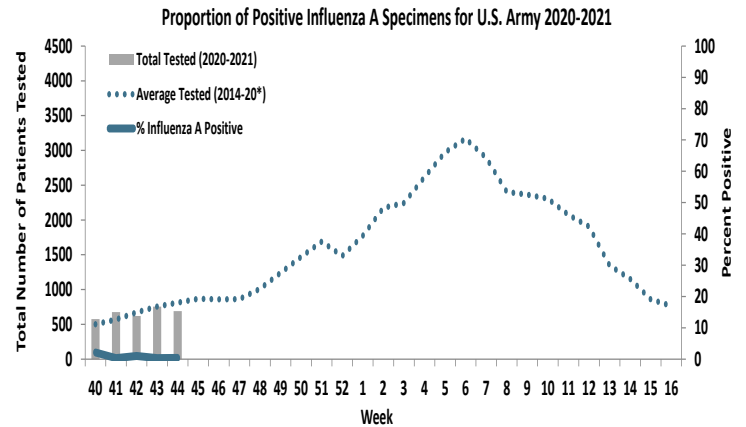
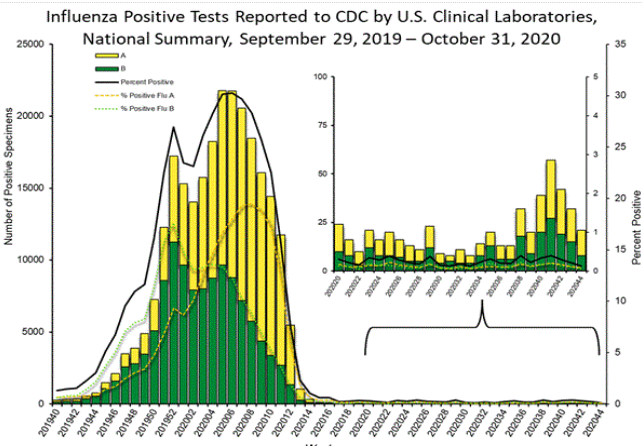


## ILI ACTIVITY - ARMY



Nationwide in week 44, incident ILI activity was 1.3%; this is below the national baseline of 2.6%. At Army medical treatment facilities, incident ILI activity decreased by 13% from week 43 to week 44. The majority of ILI encounters (90%) were from non-AD patients in week 44.

## LABORATORY RESPIRATORY SPECIMEN TESTING



Nationwide, 16,456 specimens were tested by clinical laboratories and submitted to CDC, of which 21 (0.1%) were positive. Influenza A accounted for 62% of the total positive specimens submitted to the CDC in week 44. In the Army population, 0.4% of 691 specimens tested for influenza A were positive in week 44. Two (67%) of the positive influenza A specimens were from non-AD individuals; RHC-C reported the majority (67%, n=2) of positive influenza A specimens.

Army MTF Laboratory Results, 2020-21	Influenza A	2	6	2	3	33
	Influenza B	1	0	2	2	9
	Adenovirus	0	3	0	3	7
	Enterovirus	0	0	0	0	0
	Parainfluenza	0	1	0	0	1
	RSV	2	3	4	3	13
	Negative	1,569	1,330	1,509	1,580	8,553
	Total	1,574	1,343	1,517	1,591	8,616

Of the 1,591 specimens tested in week 44, less than 1% (n=11) were positive for any type of respiratory illness. Influenza A, adenovirus, and respiratory syncytial virus each accounted for three of the positive specimens, while influenza B accounted for two. Additionally, the reported number of specimens tested increased by 5% since week 43 (n=1,517).

**Locations providing week 44 laboratory data as of 5 November 2020:** Ft Belvoir, Ft Benning, Ft Bliss, Ft Bragg, Ft Campbell, Ft Carson, Ft Drum, Ft Eustis, Ft Gordon, Ft Hood, Ft Huachuca, Ft Irwin, Ft Jackson, Ft Knox, Ft Leavenworth, Ft Lee, Ft Leonard Wood, Ft Lewis, Ft Polk, Ft Riley, Ft Rucker, Ft Sam Houston, Ft Sill, Ft Stewart, Ft Wainwright, Landstuhl Regional Medical Center, Redstone Arsenal, Tripler Army Medical Center, the U.S. Military Academy, and Walter Reed National Military Medical Center.

## LABORATORY RESPIRATORY SPECIMEN TESTING DURING WEEK 44

Region	Installation	Influenza A			Influenza B			Adenovirus		
		No. Tested	% Positive	Baseline % Positive	No. Tested	% Positive	Baseline % Positive	No. Tested	% Positive	Baseline % Positive
RHC-A	Ft. Belvoir	87	0	0	77	0	0	61	3.3	100
	Ft. Benning	26	0	0	26	3.8	1.7			
	Ft. Bragg			0						
	Ft. Campbell	22	0	0	22	0	1.3			100
	Ft. Drum	9	0	22.2						
	Ft. Eustis			13.3			100			
	Ft. Gordon	11	0	1.9	11	0	4			100
	Ft. Jackson	4	0	5.7	4	0	2.9			
	Ft. Knox	7	0	0	7	0	7.7			
	Ft. Lee	3	0	0						
	Ft. Rucker	27	0	0	27	0	7.1			
	Ft. Stewart	15	0	0	15	0	7			
Redstone Arsenal	3	0	0	3	0	0				
U.S. Military Academy	2	0	0			0				
RHC-C	Ft. Bliss	65	0	0	9	0	0			17.5
	Ft. Carson	112	0.9	14.6						
	Ft. Hood	42	0	0	42	0	31.5	15	0	0
	Ft. Huachuca	8	0	0	8	0	0			
	Ft. Leavenworth	6	0	14.3	6	0	0			
	Ft. Leonard Wood	24	0	10.5	24	0	0			
	Ft. Polk	36	2.8	0			100			
	Ft. Riley	27	0	0	27	0	0			
Ft. Sam Houston	67	0	2	67	0	2.5			100	
Ft. Sill	18	0	0			100				
RHC-E	Landstuhl Regional Medical Center	23	0	2.9	23	0	0	23	4.3	0
RHC-P	Ft. Wainwright	24	4.2	11.8	24	4.2	0			
	Korea			0			0			0
	Tripler Army Medical Center	29	0	0	29	0	2.9	29	0	5.6
Region	Installation	Enterovirus			Parainfluenza			RSV		
		No. Tested	% Positive	Baseline % Pos.	No. Tested	% Positive	Baseline % Pos.	No. Tested	% Positive	Baseline % Pos.
RHC-A	Ft. Belvoir				61	0	21.3	80	1.3	50
	Ft. Campbell						100			100
	Ft. Drum			100			100			0
	Ft. Gordon						100			100
	Ft. Stewart						100	2	0	45
	U.S. Military Academy			100			100			100
RHC-C	Ft. Bliss							9	0	0.7
	Ft. Carson							6	0	7.7
	Ft. Hood				15	0	16.7	20	0	24.4
	Ft. Leavenworth							1	0	0
	Ft. Leonard Wood						100			
	Ft. Polk							1	0	50
	Ft. Riley							11	18.2	0
Ft. Sam Houston						100			100	
Ft. Sill							1	0	0	
RHC-E	Landstuhl Regional Medical Center				23	0	17.1	24	0	0
RHC-P	Ft. Wainwright							20	0	0
	Tripler Army Medical Center	29	0	0	29	0	0			100

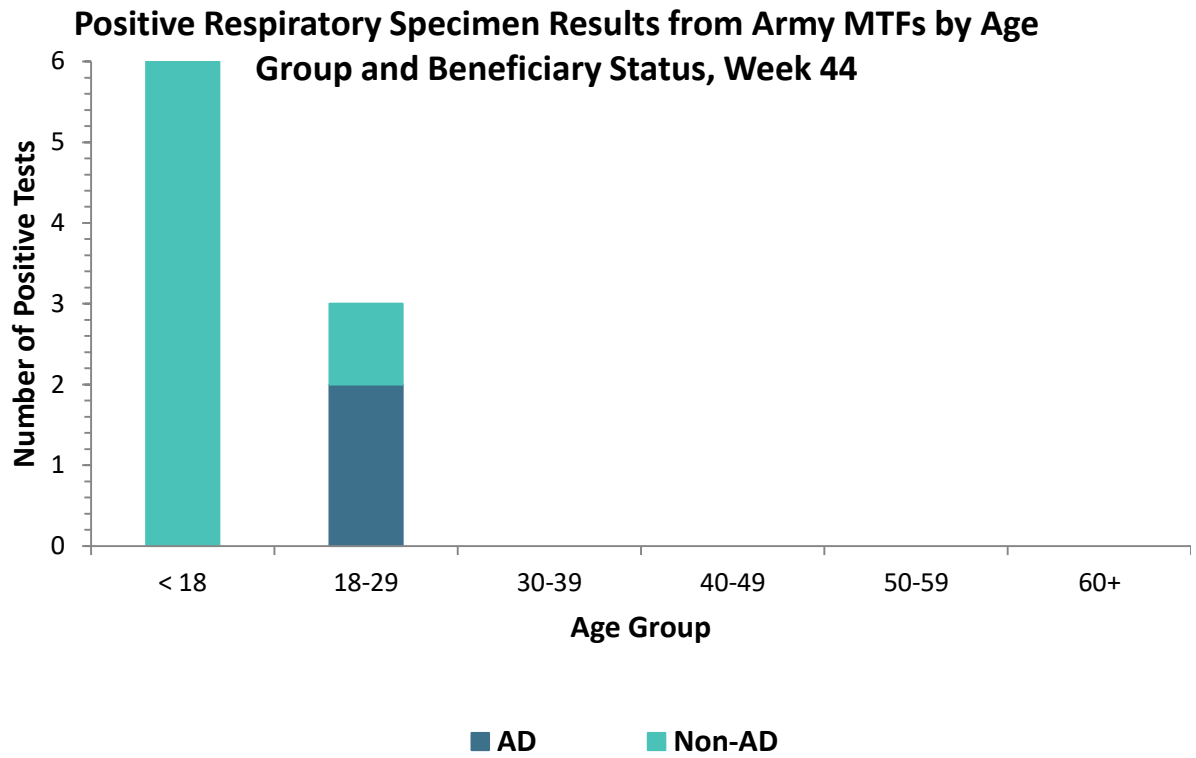
No.: Number of specimens tested during MMWR week 44, 2020/2021 season.

% Pos.: Percentage of positive specimens reported during MMWR week 44, 2020/2021 season.

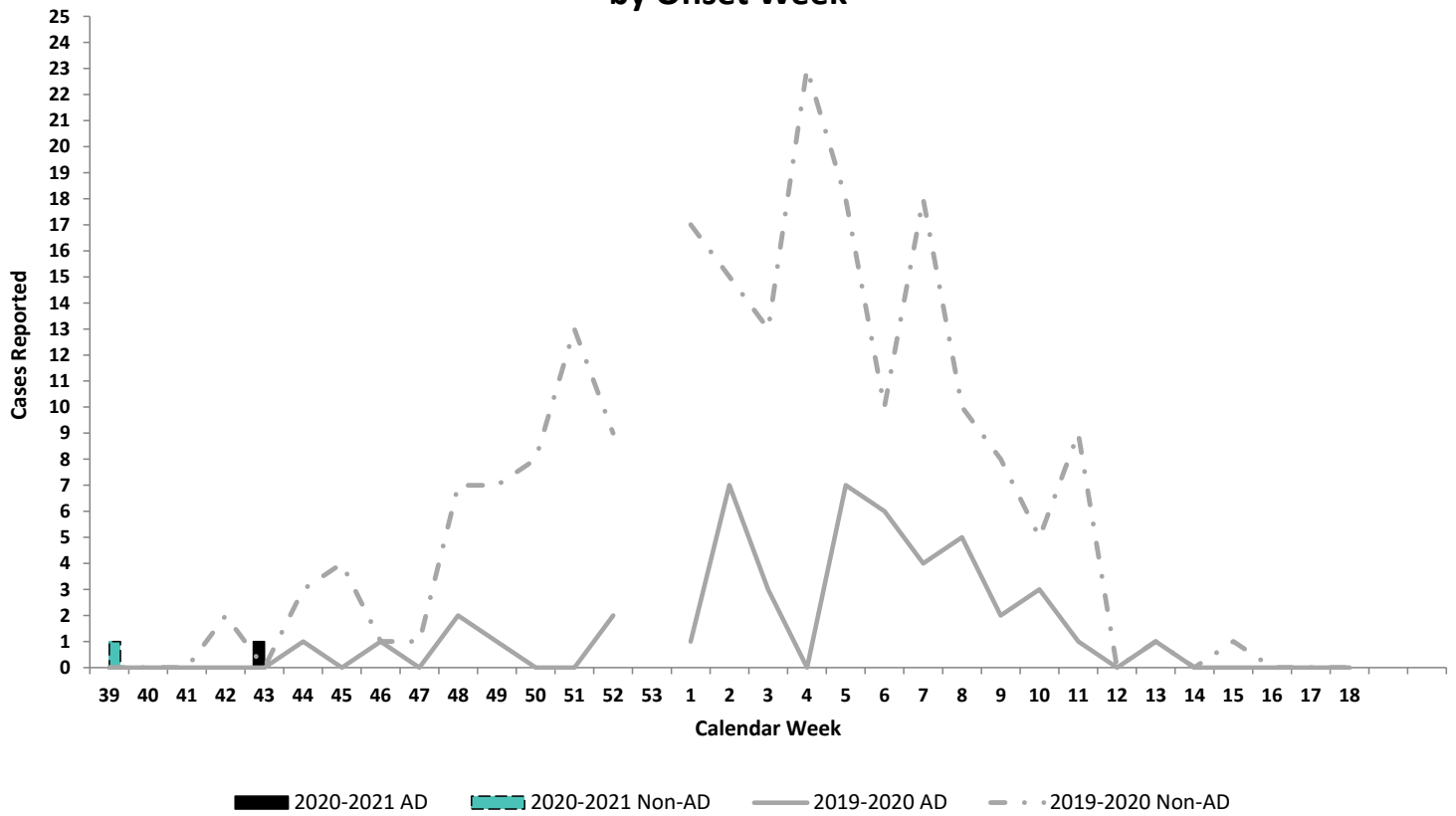
Baseline % Pos.: Percentage of positive specimens reported in MMWR week 44 during influenza seasons from September 2012 - May 2020.

Missing values indicate that specimens were not tested for the disease during the week of interest.





**Army Influenza-Associated Hospitalizations Reported in DRSi by Onset Week**

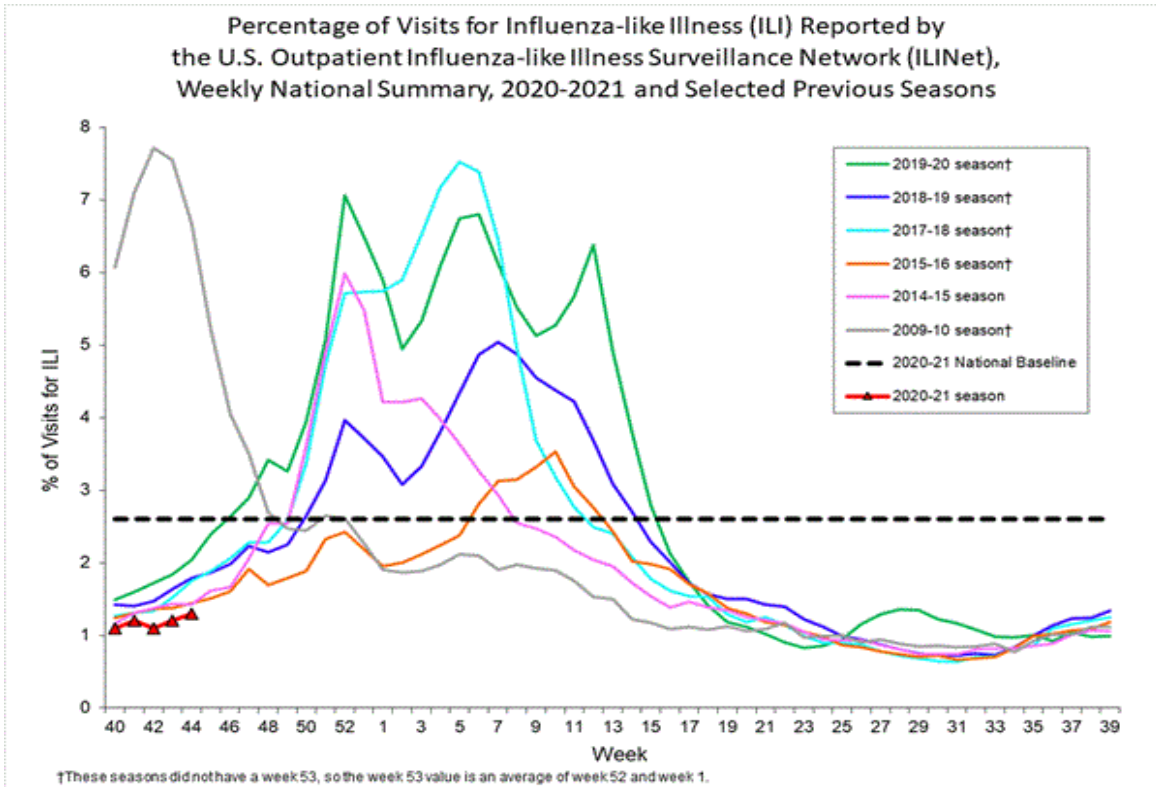


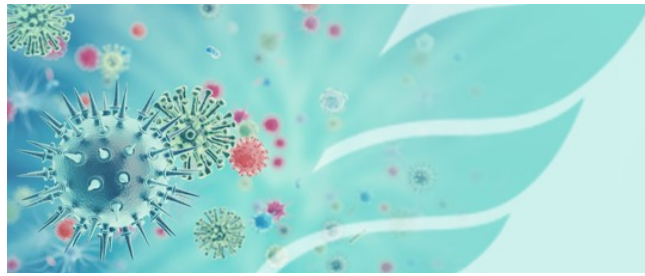


U.S. Army Public Health Center

# Army Influenza Activity Report

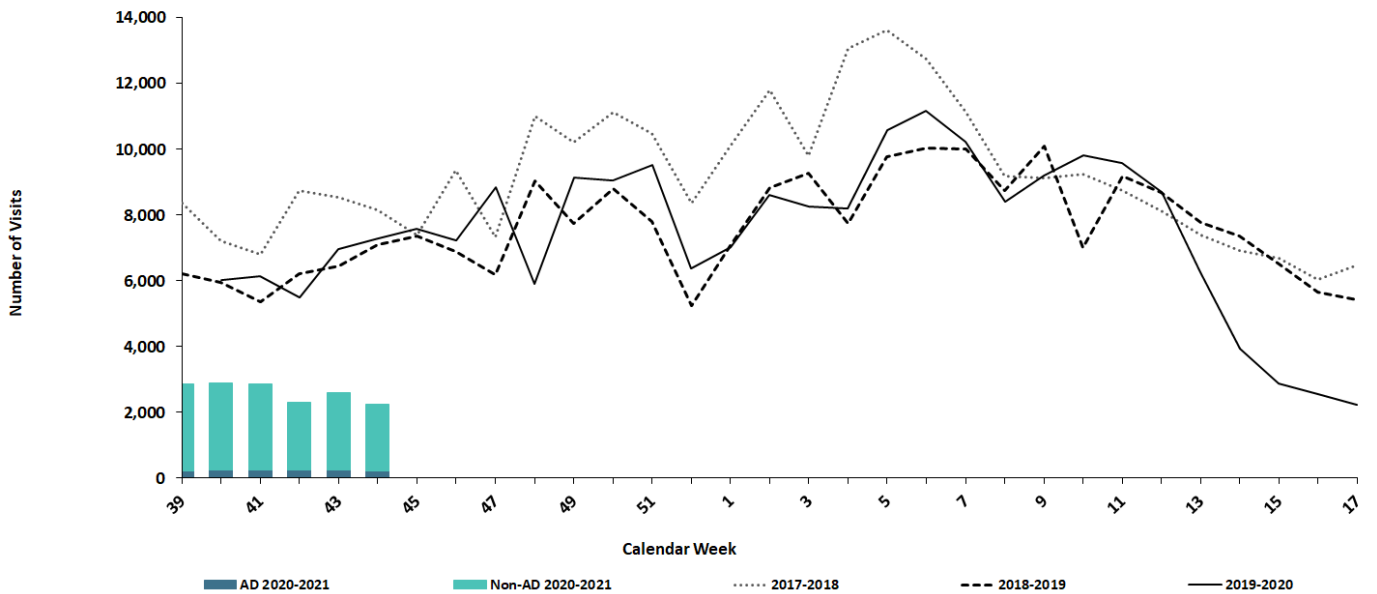
Week ending 31 October 2020 (week 44)



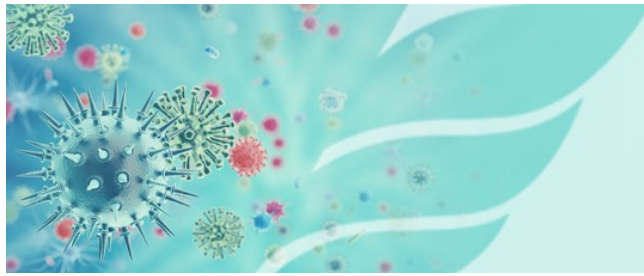


U.S. Army Public Health Center  
**Army Influenza Activity Report**  
Week ending 31 October 2020 (week 44)

**ESSENCE Weekly Outpatient Clinic Visits for Influenza-like Illness**  
*Army MTFs, All Services, 2017-2021*



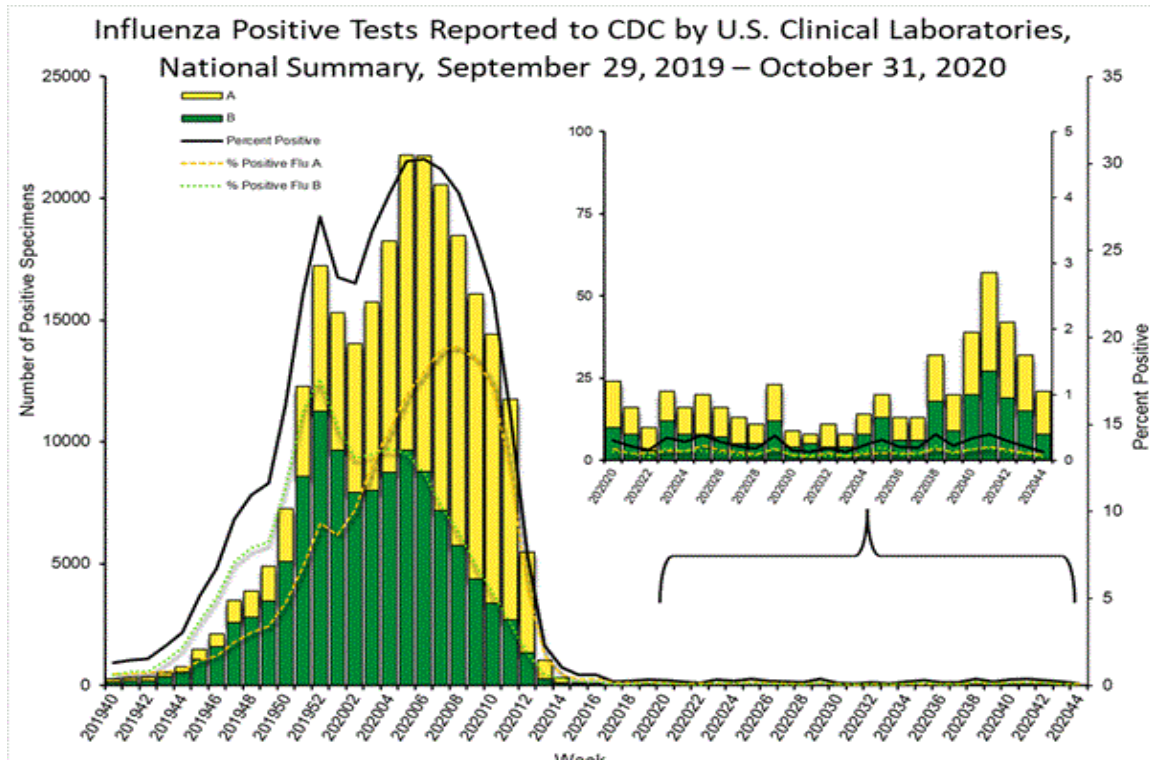




U.S. Army Public Health Center

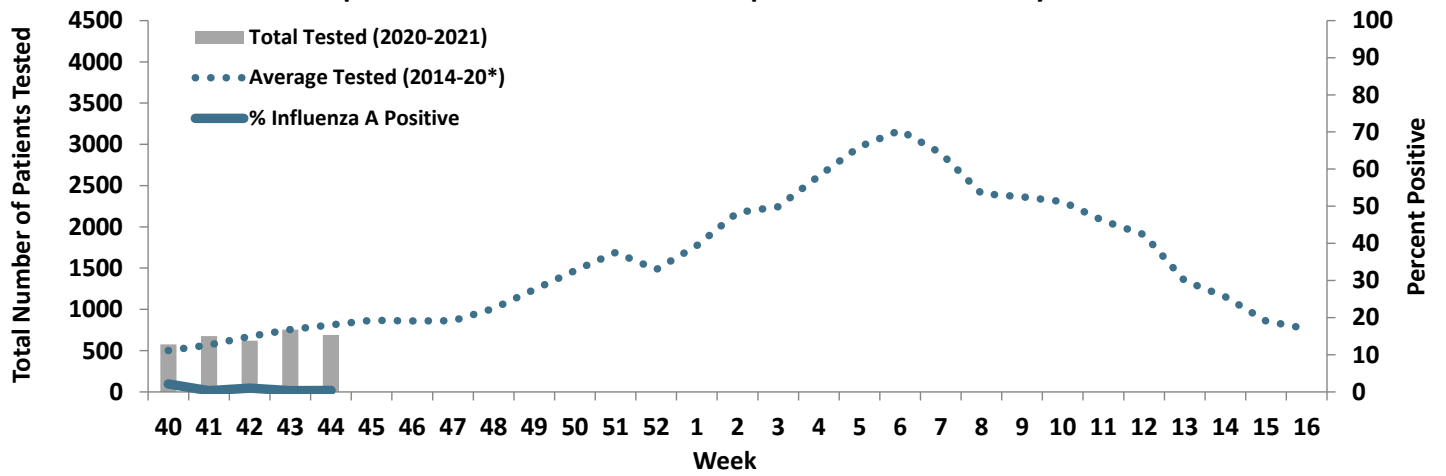
# Army Influenza Activity Report

Week ending 31 October 2020 (week 44)





**Proportion of Positive Influenza A Specimens for U.S. Army 2020-2021**



\*2014/2015 influenza season - 2019/2020 influenza season